

Capitolul 1 – Instalare IIS

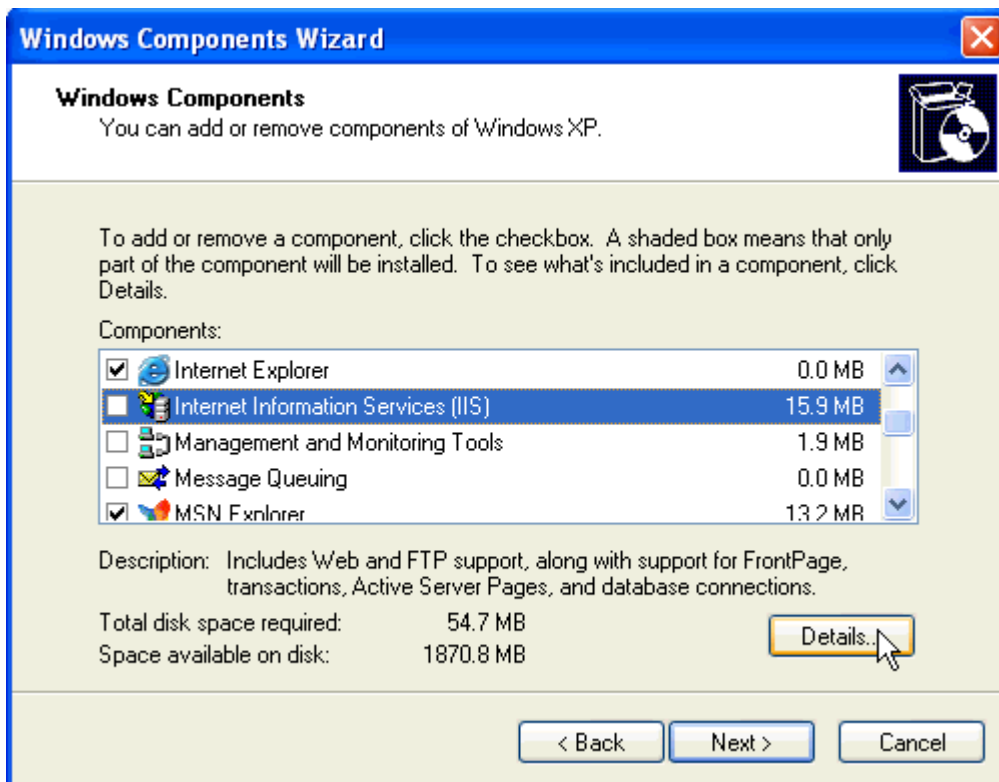
Instalare pe Win 2000 / XP

Pentru instalarea IIS 5.1 pe Windows XP Pro/Windows 2000 trebuie urmati pasii :

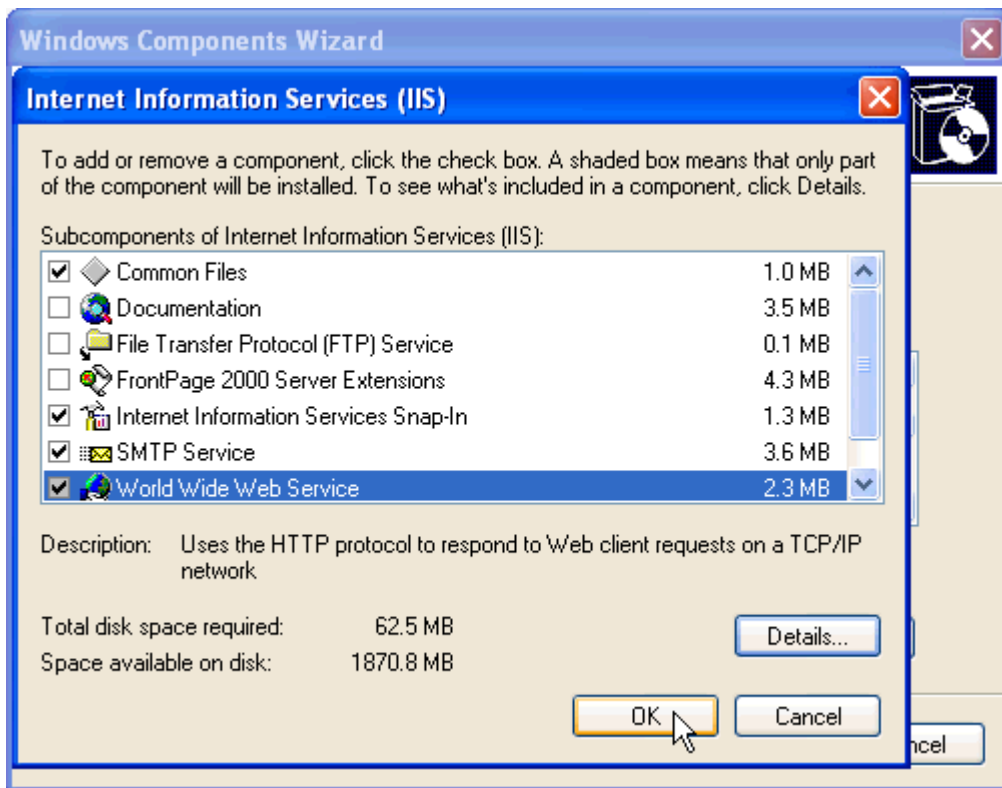
1. Din meniul Start, intrati in Control Panel
2. Dublu-click pe "Add or Remove Programs".
3. Click pe Add/Remove Windows Components.



4. Click pe Internet Information Services (IIS) si apoi click pe Details.



5. In Internet Information Services (IIS), selectati optiunile pentru SMTP Service si World Wide Web Service, si apoi apasati pe OK.



6. In lista Windows Component, asigurati-va ca optiunea Internet Information Services (IIS) este selectata, si apoi apasati pe OK pentru a instala componentele selectate.

Acum puteti verifica rapid daca a fost instalat IIS:

- Porniti Internet Explorer sau orice alt browser de Internet si introduceti adresa <http://localhost/>
- Ar trebui sa vedeti pagina standart de "Welcome" a IIS-ului.

Instalare pe Win Vista

Pasul 1: Porniti Control Panel

Pentru a deschide fereastra Control Panel:

- Apasati butonul **Start**
- Apasati **Control Panel**

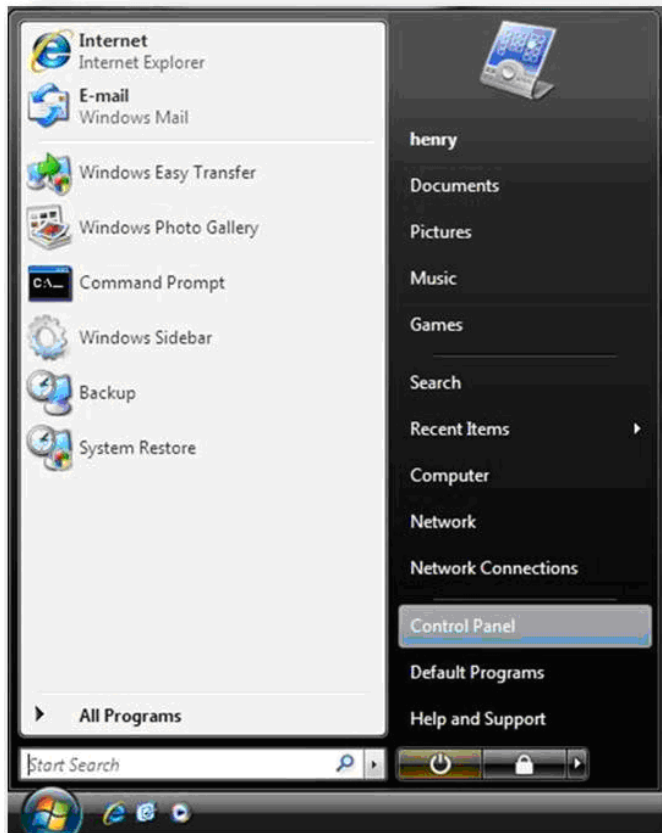


Figura 1a: Accesare Control Panel

Sau

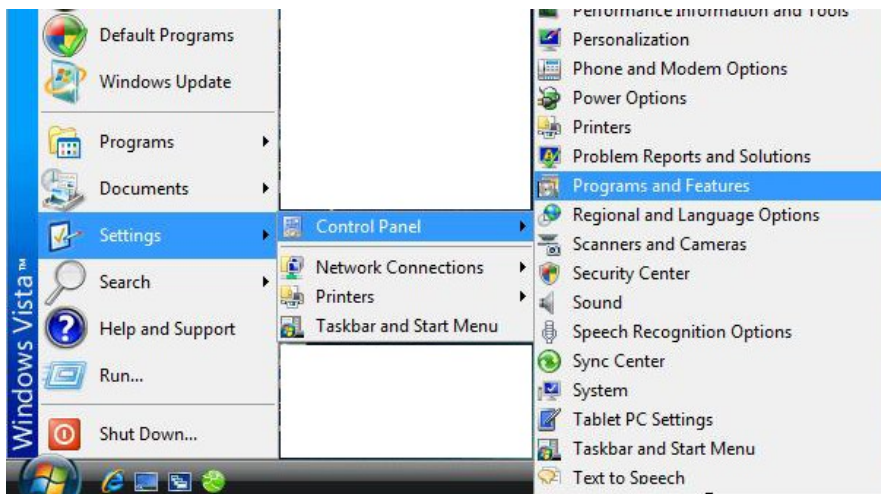


Figura 1b: Accesare Control Panel si Programs and Features

In cazul in care va aflati in situatia prezentata in Figura 1b, apasati pe “**Programs and Features**” si apoi sariti la **pasul 3**.

Pasul 2: Control Panel

Fereastra Control Panel este afisata:

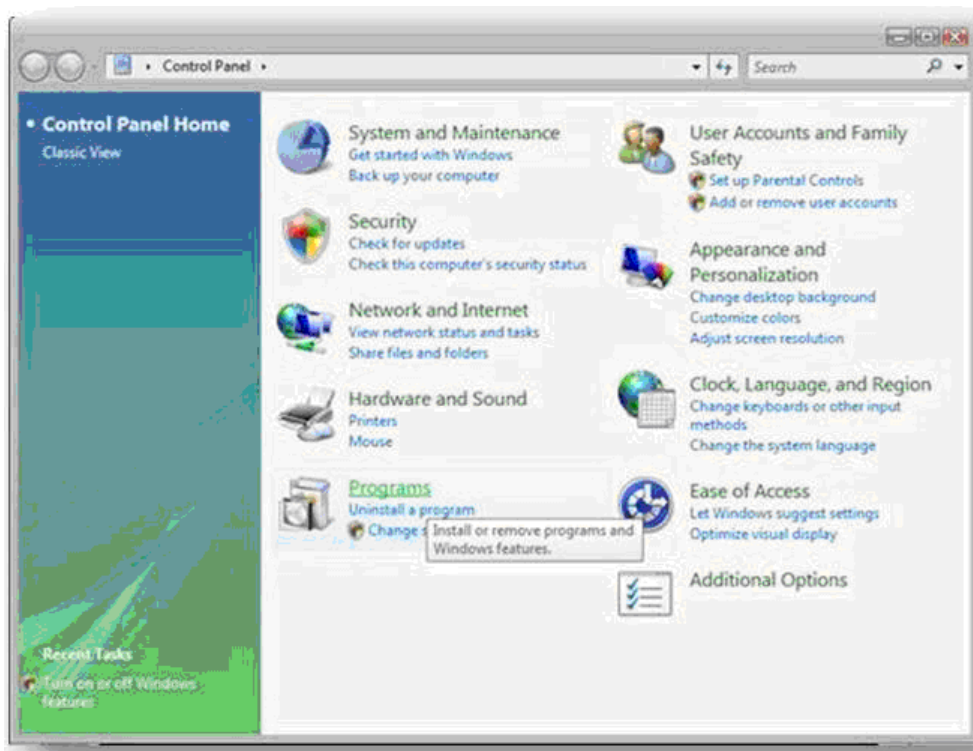


Figura 2: Fereastra Control Panel

- In fereastra Control Panel faceti dublu-click pe **Programs**

Pasul 3: Selectati Turn Windows Features On or Off

Optiunile Programs din Control Panel sunt afisate si sunt urmatoarele:

- Apasati **Turn Windows Features On or Off**

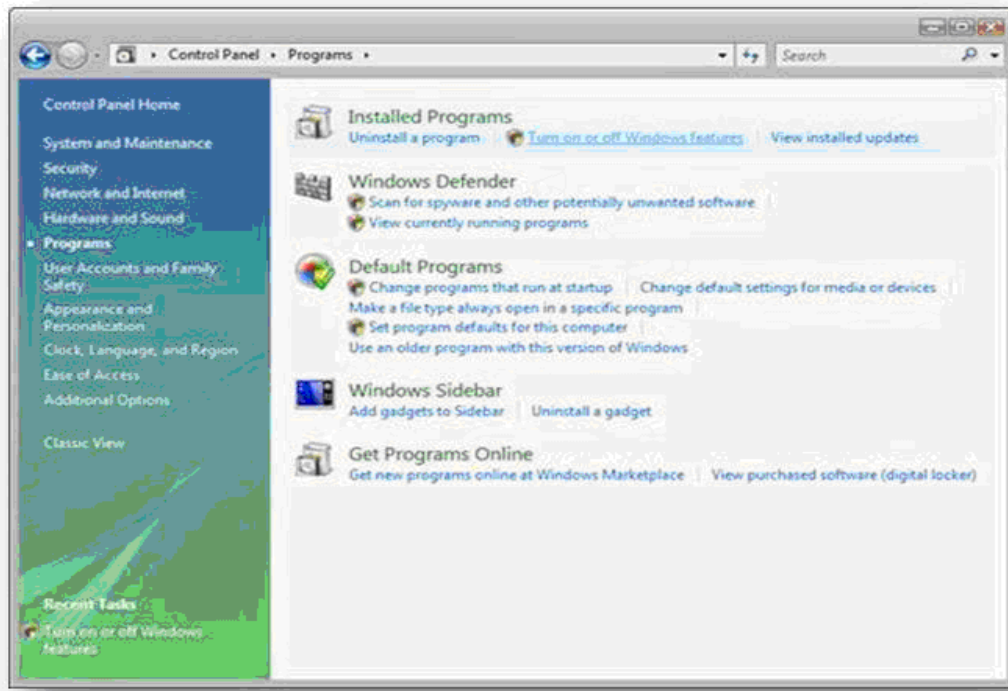


Figura 3a: Optiuni instalare din Control Panel

sau

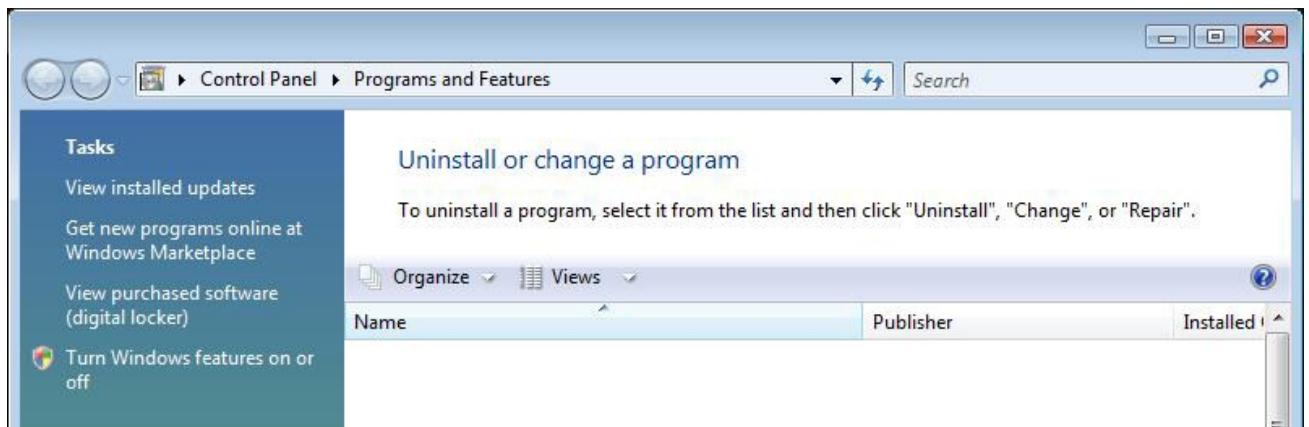


Figura 3b: Selectare "Turn Windows features on or off"

- In acest punct puteti primi un mesaj legat de Windows Security

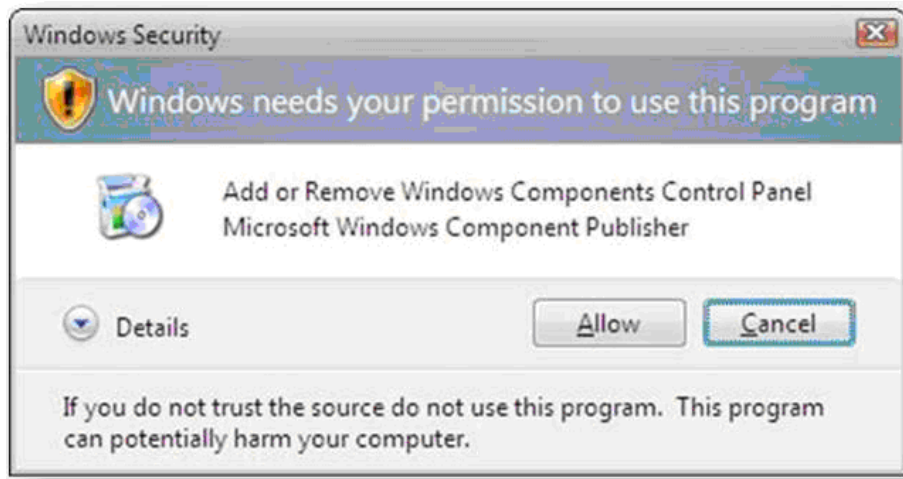


Figura 4: Windows Security Dialog

- Apasati **Allow** pentru a continua
- Fereastra pentru **Turn Windows Features** on sau off va fi afisata

Pasul 4: Fereastra Windows Features

- Dublu-click pe **Internet Information Services**
- Optiuni aditionale ale IIS vor fi afisate
- Apasati pe optiunea de langa Internet Information Services pentru a selecta optiunea de instalare

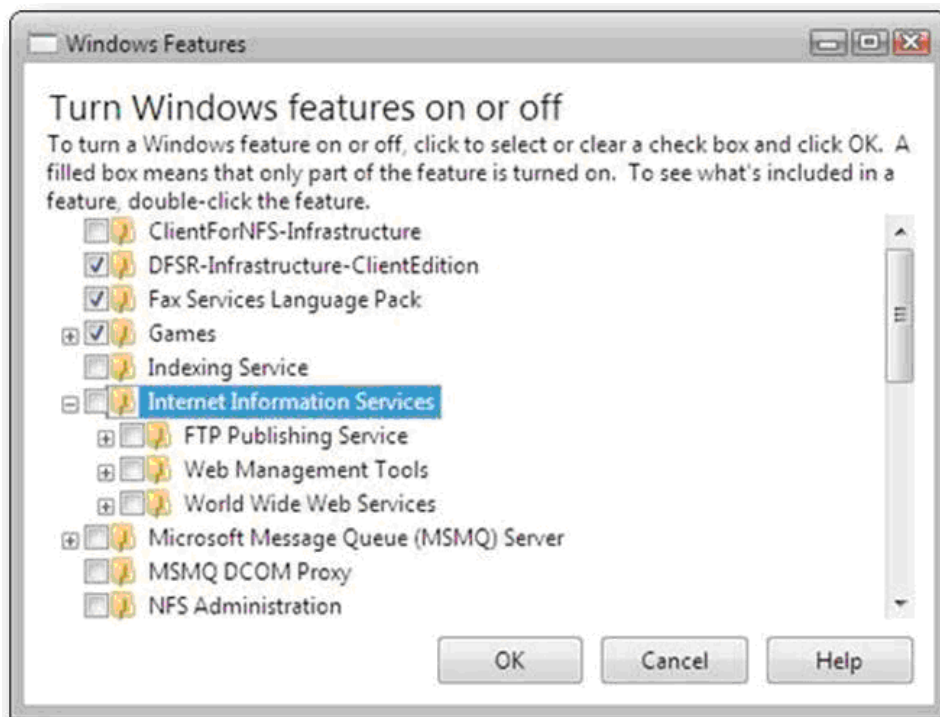


Figura 5: Windows Features - IIS

Pasul 5: IIS 7.0 Selectii de instalare standard

- A se nota ca optiunile standard de instalare ale IIS 7.0 sunt deja selectate

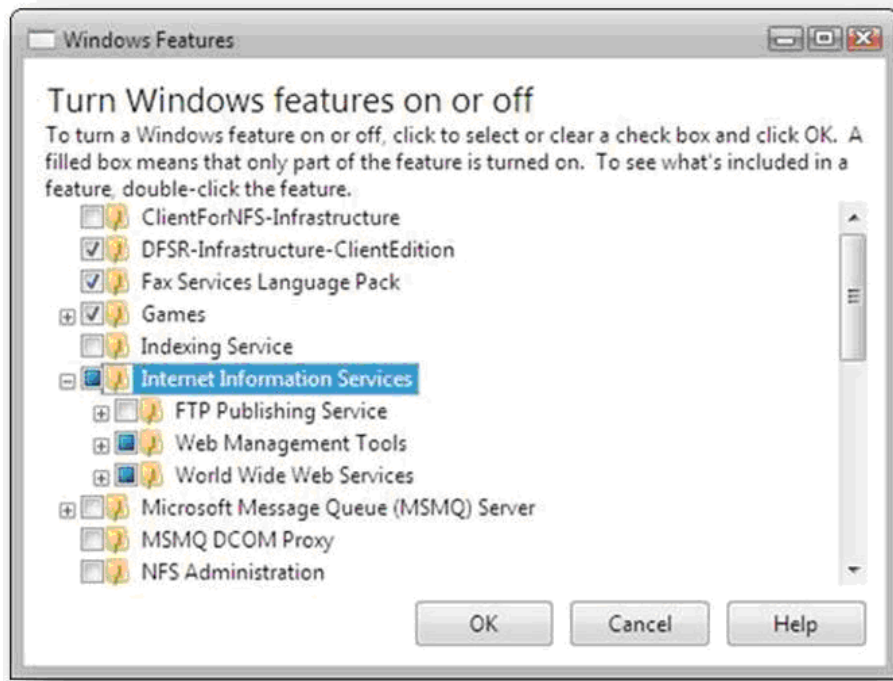


Figura 6: IIS 7.0 Feature Selections

Pasul 6: Explorati facilitatile disponibile ale IIS 7.0

- Pentru a continua expandarea facilitatilor din lista, faceti dublu-click pe facilitate pentru a vedea sub-facilitatile
- Ca de exemplu faceti dublu-click pe Web Management Tools pentru a vedea instrumentele instalate standard

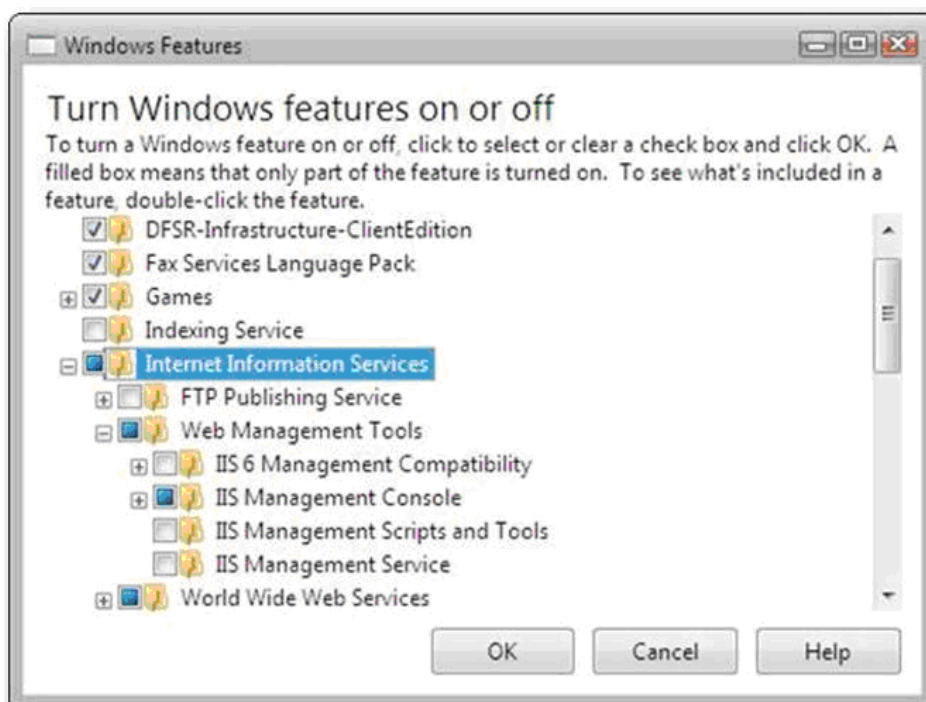


Figura 7: Alegerea facilitatilor

Pasul 7: Selectarea facilitatilor de instalare ale IIS 7.0

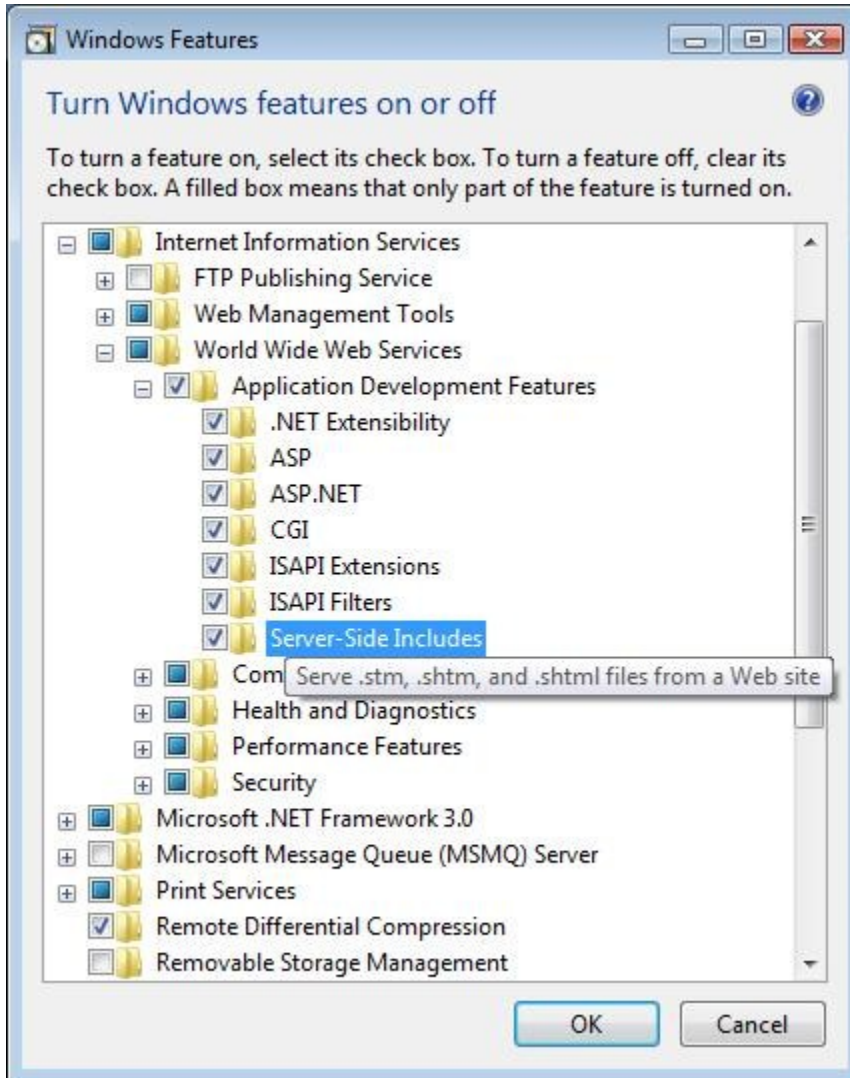


Figura 8: Selectarea facilitatilor

Selectati ce facilitati considerati ca mai aveti nevoie si apoi apasati **OK** pentru a porni instalarea.

Pasul 8: Progresul instalarii

Urmatoarea fereastra va fi afisata:

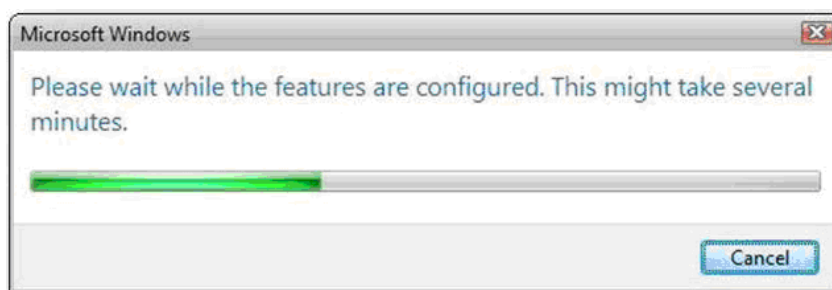
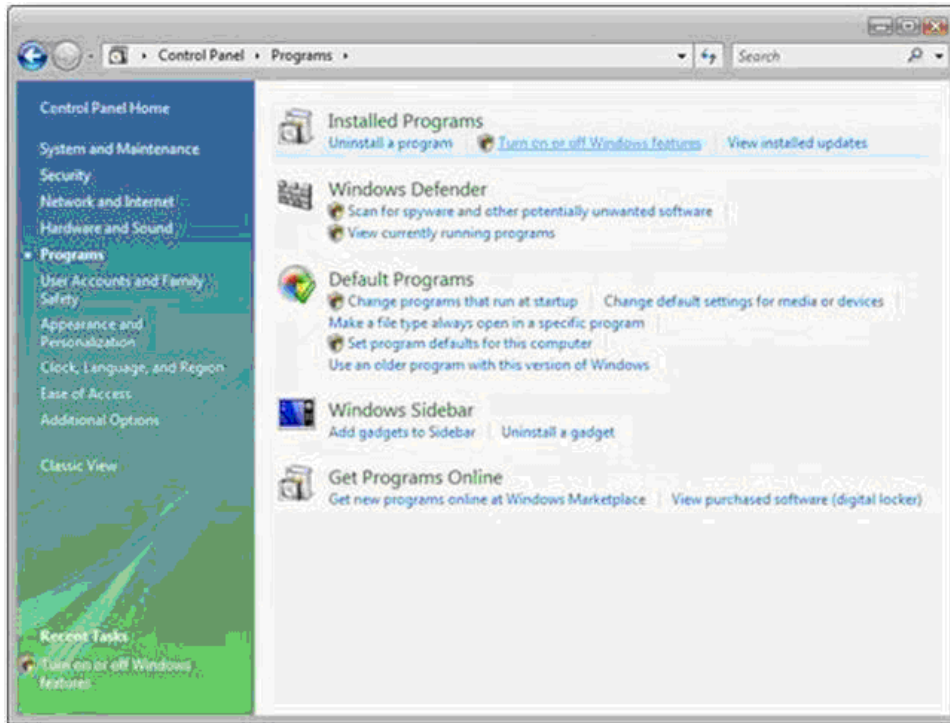


Figura 9: Progresul instalarii

Pasul 9: Instalare terminata

Cand instalarea este incheiata, fereastra Windows Features se inchide si sunteti intors in Control Panel.



Pasul 10: Verificarea instalarii IIS 7.0

Acum puteti verifica rapid daca IIS 7.0 a fost instalat:

- Porniti Internet Explorer sau orice alt browser web si introduceti adresa <http://localhost/>
- Ar trebui sa vedeti pagina standart "Welcome" a IIS-ului 7.0.

Instalare pe Win 2008

Pasul 1: Porniti Server Manager

Pentru a porni Server Manager, apasati pe: **Start Menu -> All Programs -> Administrative Tools -> Server Manager**. Fereastra Server Manager se va deschide.

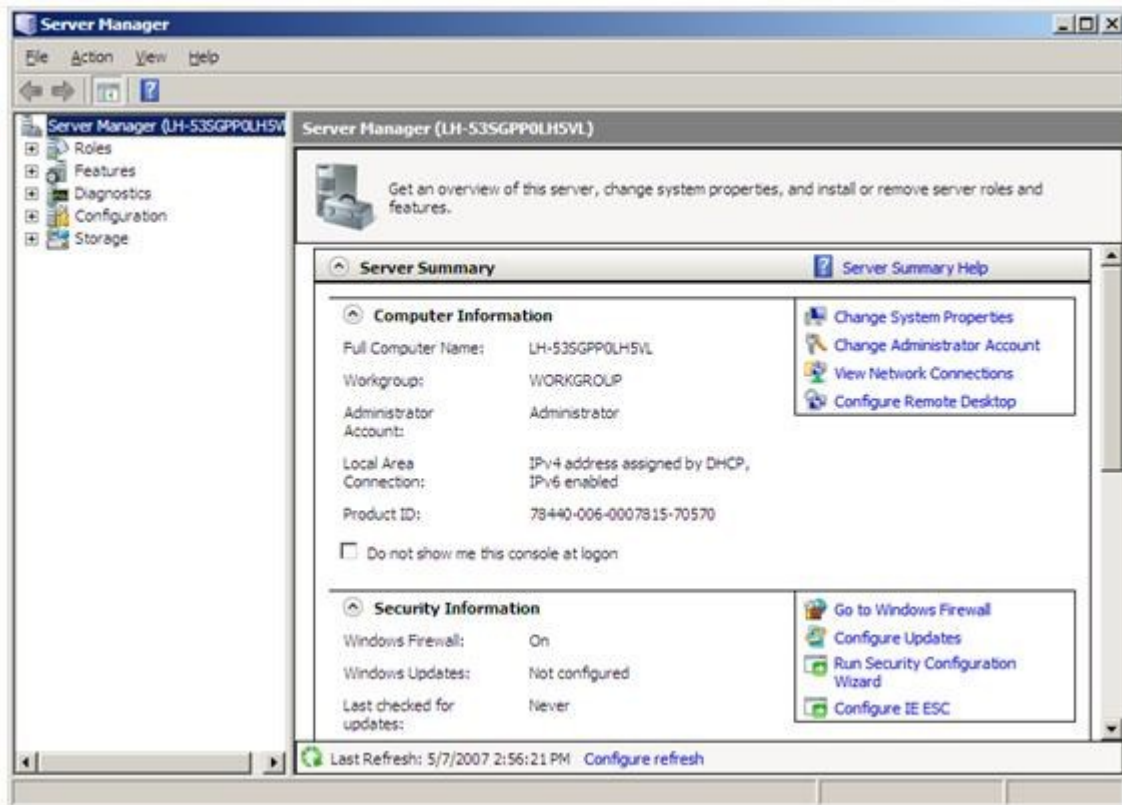


Figura 1: Server Manager

Pasul 2: Adaugarea unui Server Role

- In Server Manager, selectati **Roles**.
- Role Summary View va fi afisat.

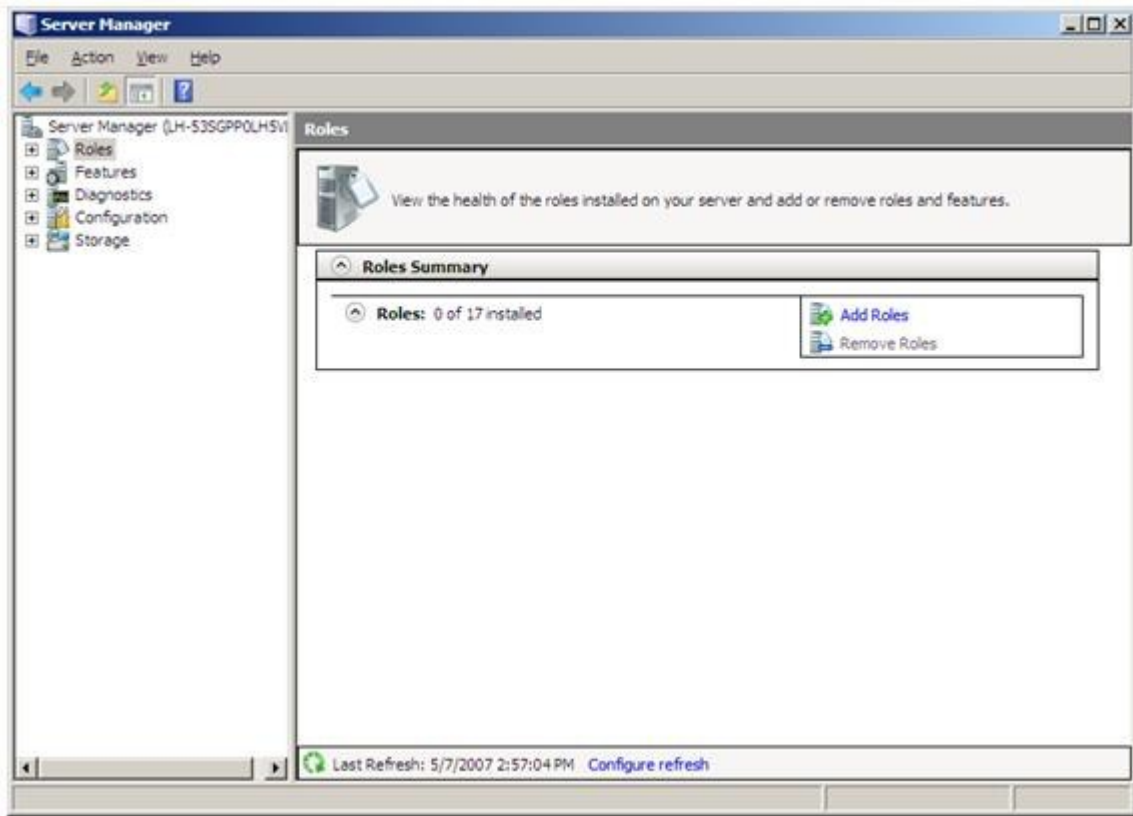


Figura 2: Pornirea Add Roles Wizard

Pasul 3: Porniti Add Roles Wizard

- Apasati pe **Add Roles**.
- Add Roles Wizard se va deschide.
- Apasati **Next** pentru a selecta rolurile de instalat.

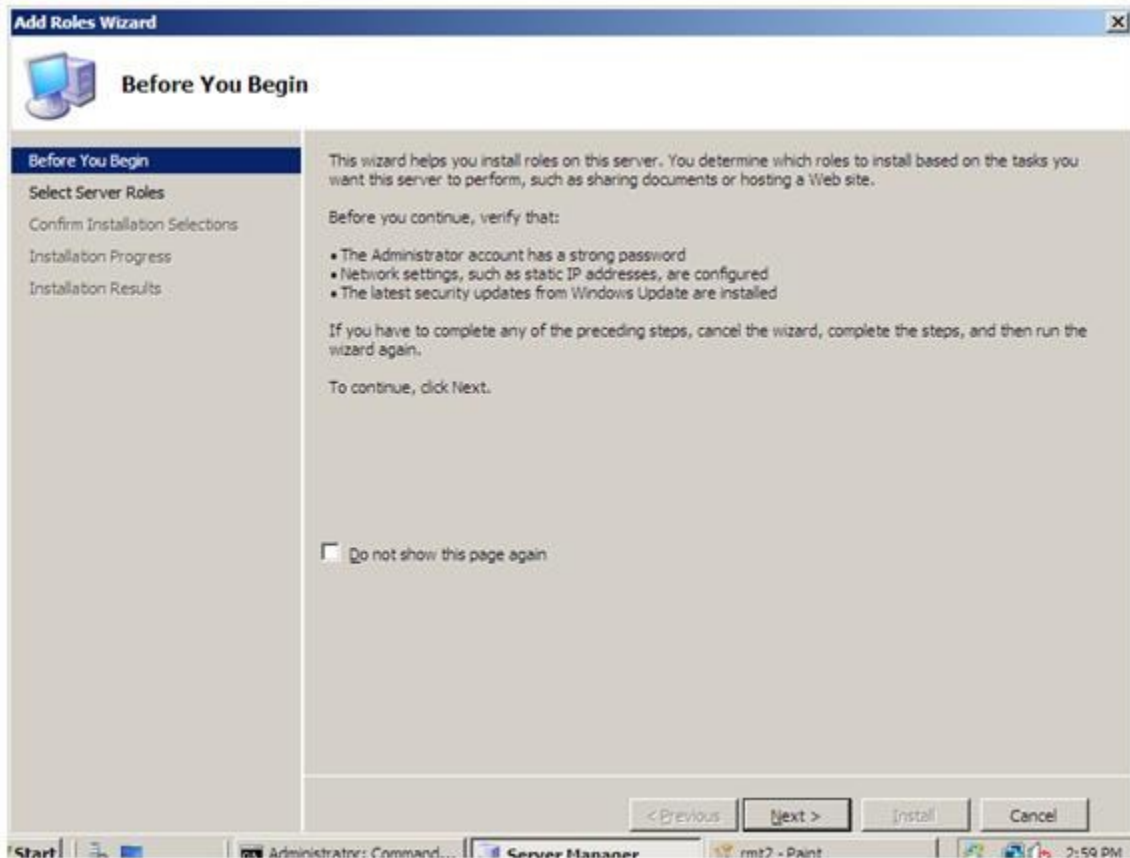


Figura 3: Informatii Add Roles Wizard

Pasul 4: Alegeti Web Server (IIS) Role pentru a instala

- Selectati Web Server (IIS).

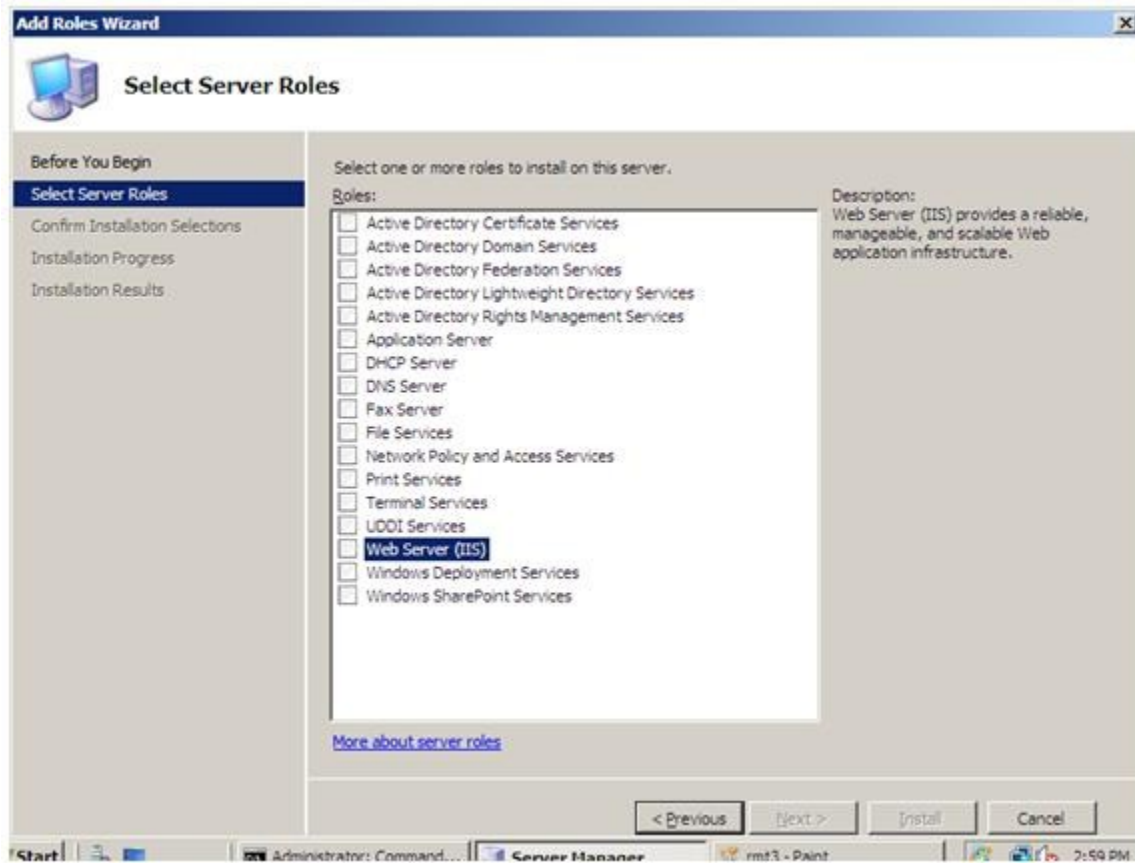


Figura 4: Selectati Web Server (IIS) in Add Roles Wizard

Pasul 5: Web Server Role depinde de WAS

Add Roles Wizard va va anunta de orice dependinta necesara; cum IIS depinde de Windows Process Activation Service (WAS), urmatoarea fereastra de dialog va apare.

- Apasati pe **Add Required Role Services** pentru a continua.



Figura 5: Adaugare dependinte

Web Server este acum selectat pentru a fi instalat. Fereastra Select Server Roles se va deschide.

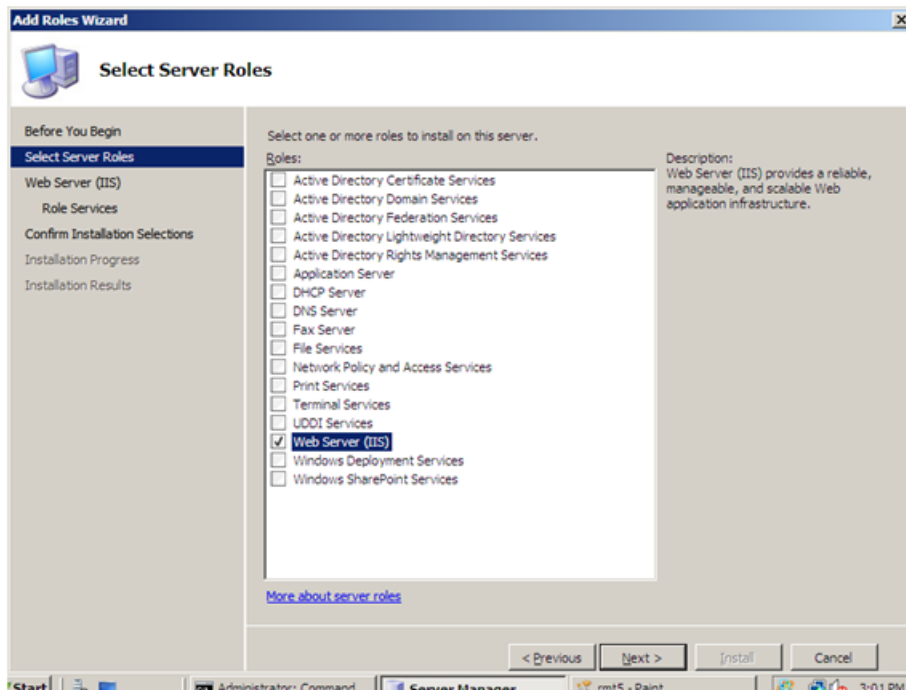


Figura 6: Web Server (IIS) selectat

- Apasati **Next** pentru a continua.

Pasul 6: Informatii aditionale

Urmatoarea fereastra va apare.

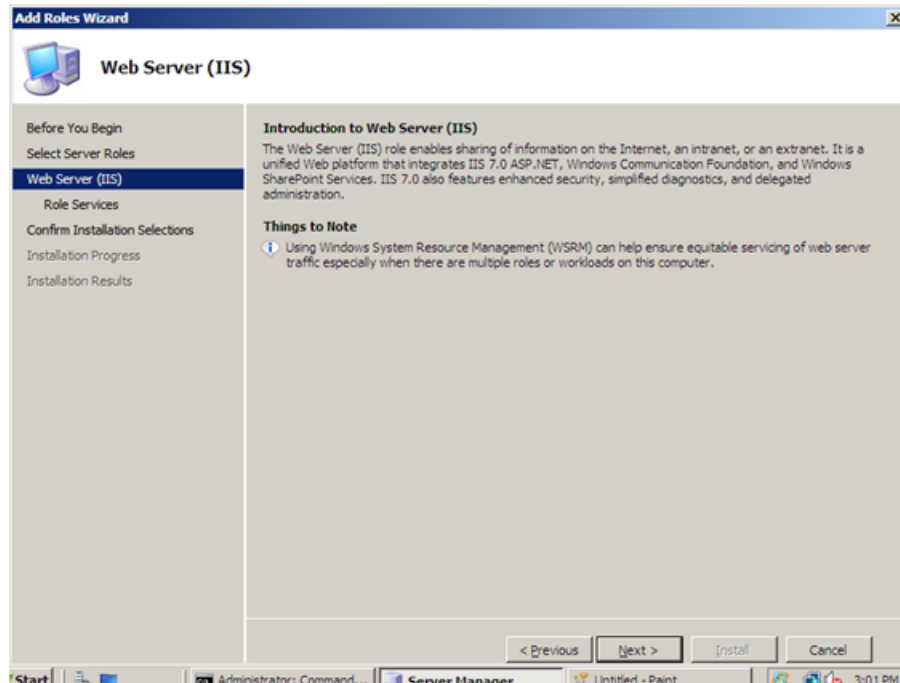


Figura 7: Introducere in Web Server Dialog

- Apasati **Next** pentru a continua

Pasul 7: Vizualizare optiuni IIS 7.0

In Add Roles Wizard va fi afisata intreaga lista de optiuni disponibila de instalat pentru IIS 7.0 cum este aratat mai jos. Optiunile standard de instalare sunt deja selectate.

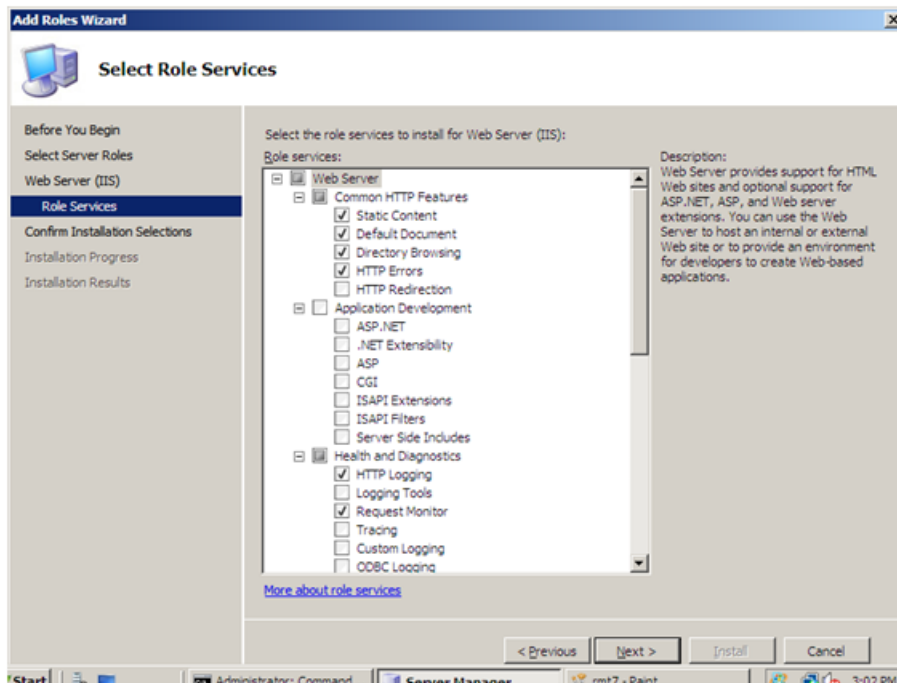


Figura 8: Lista optiuni Web Server

Pasul 8: Selectarea optiunii de instalare ASP.NET pentru IIS

- Incepeti prin a selecta optiunea pentru ASP.NET. Va apare urmatoarea fereastra.
- Wizard-ul va va atentiona daca adaugand o optiune la IIS va necesita instalarea si altor optiuni.

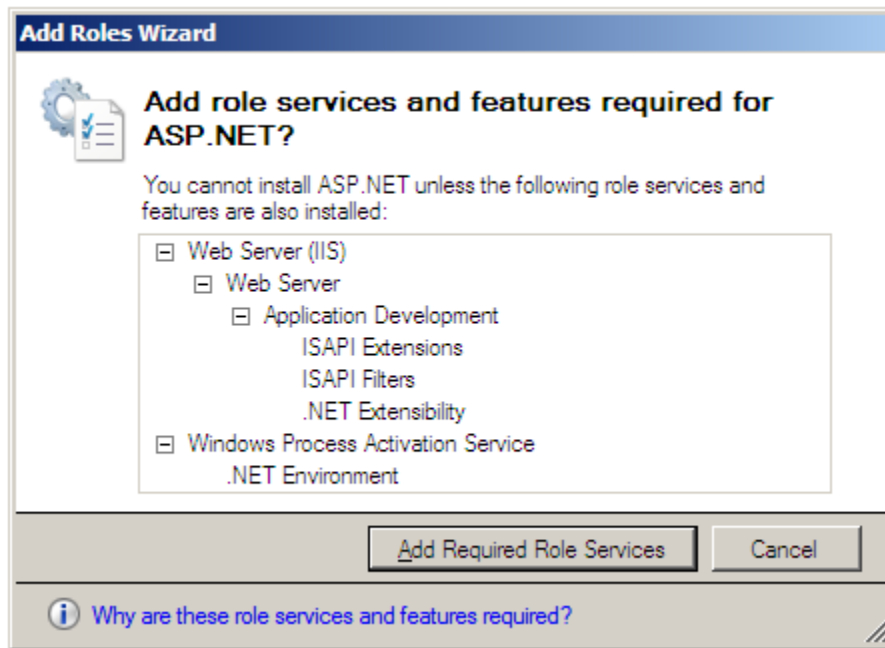


Figura 9: Informatii privind dependintele

- Apasati pe **Add Required Role Services** pentru a continua.
- Apasati **Next** pentru a continua instalarea.

Pasul 9: Sumarul optiunilor pentru instalare

- Wizard-ul afiseaza un sumar a ceea ce va fi instalat, ca ma jos

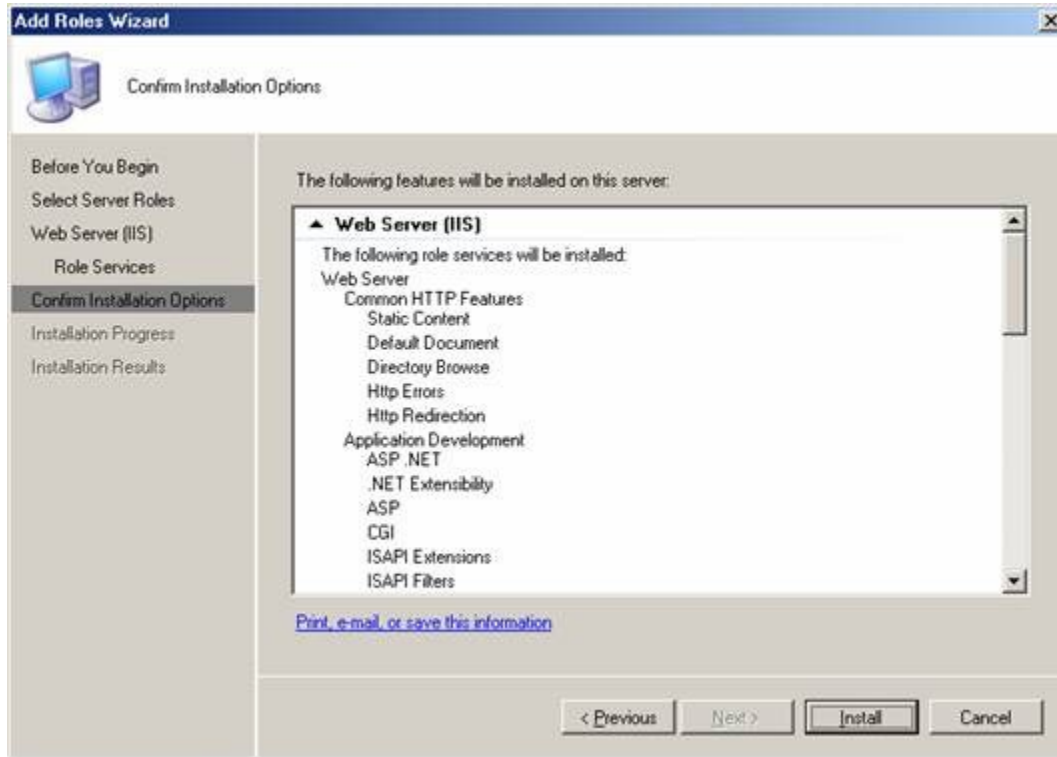
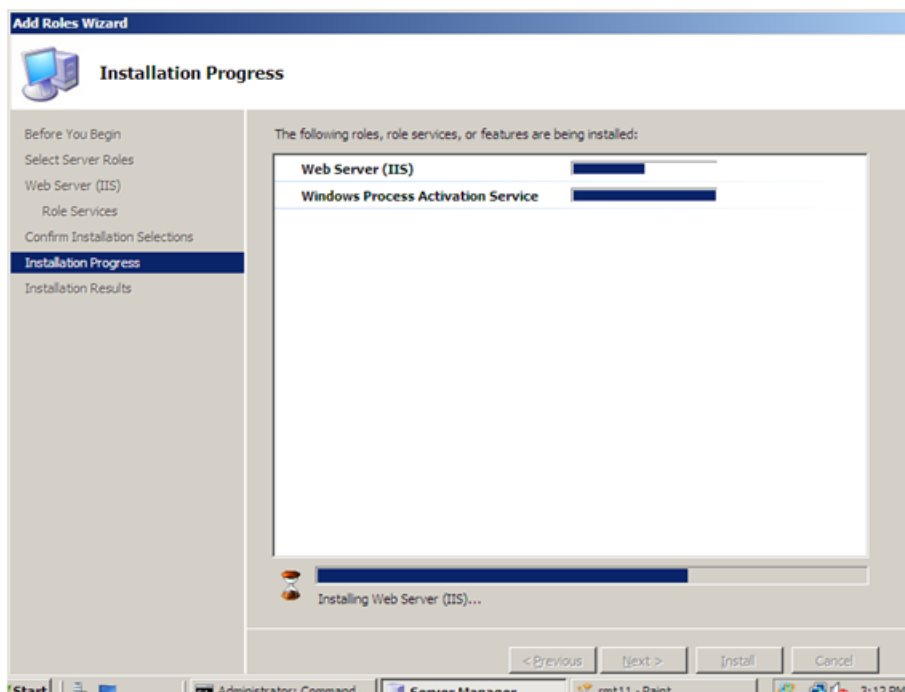


Figura 10: Sumarul optiunilor

- Apasati **Install** pentru a continua.

Pasul 10: Progresul instalarii

Dupa ce apasati pe **Install**, fereastra de dialog pentru progresul instalarii apare.



Pasul 11: Instalare terminata

Cand instalarea IIS 7.0 s-a terminat, se va deschide o fereastră de dialog. Apasati pe **Close** pentru a va intoarce in Server Manager.

Pasul 13: Verificarea corectitudinii instalarii IIS 7.0

Acum puteti verifica rapid daca IIS 7.0 a fost instalat:

- Porniti Internet Explorer sau orice alt browser web si introduceti adresa <http://localhost/>
- Ar trebui sa vedeti pagina standart "Welcome" a IIS-ului 7.0

Capitolul 2 - Instalare .NET Framework Versiunea 2.0

Incepeti prin a regasi fisierul dotnetfx.exe din directorul UTILITARE de pe CD-ul CIEL. Faceti dublu-click pe fisier pentru a porni instalarea si va apare o fereastra standard de instalare.

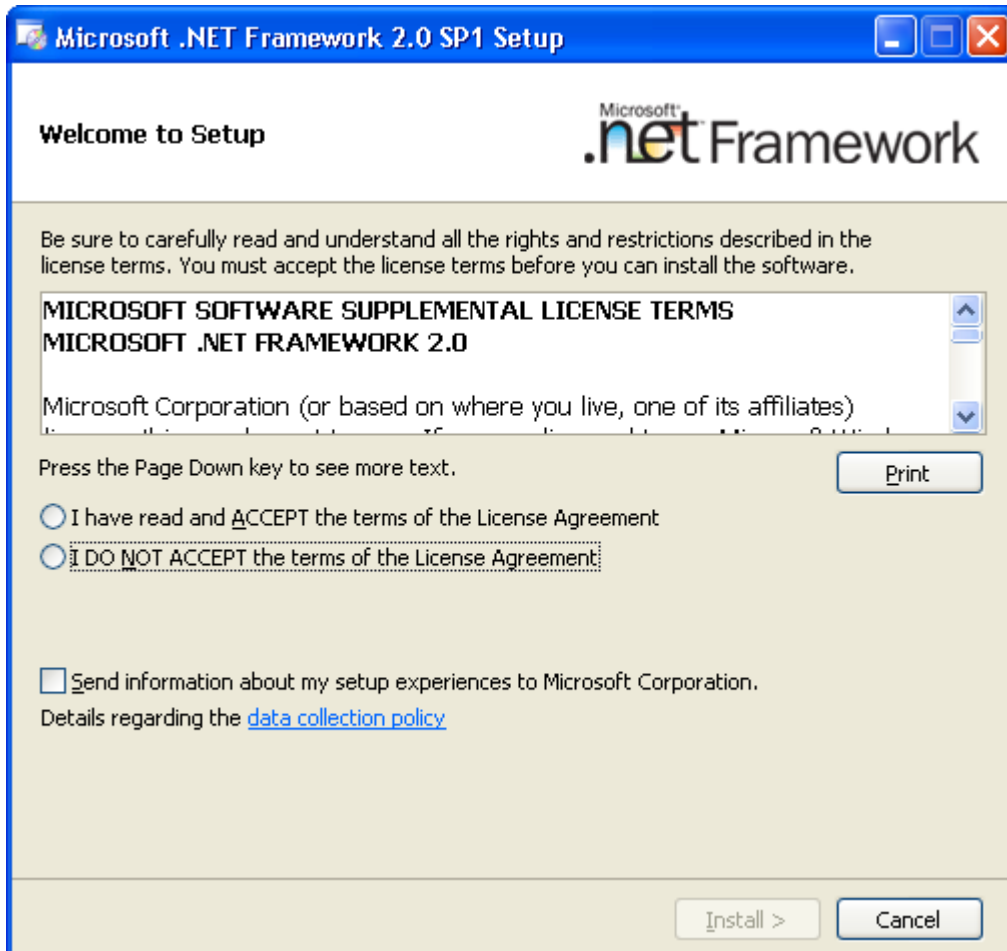


Figura 1 – Setup-ul Microsoft .NET Framework

Dupa acceptarea licentei si apasarea butonului Install> nu mai este cam nimic de facut, instalarea decurge aproape singura.

Aplicatia va va ruga sa inchideti orice aplicatii care pot afecta rulara acesteia. Printre aceste aplicatii se afla si Microsoft Outlook.

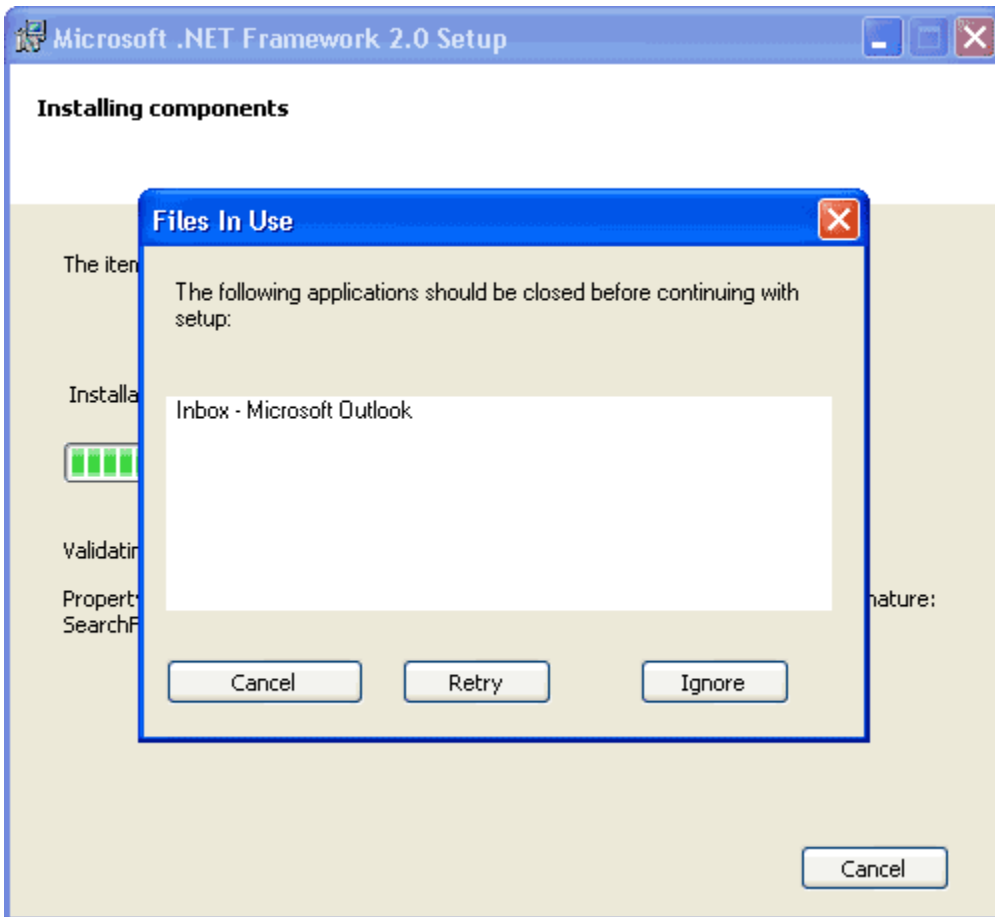


Figura 2 – Instalare Microsoft .NET Framework versiunea 2.0 – Inchidere aplicatii in uz

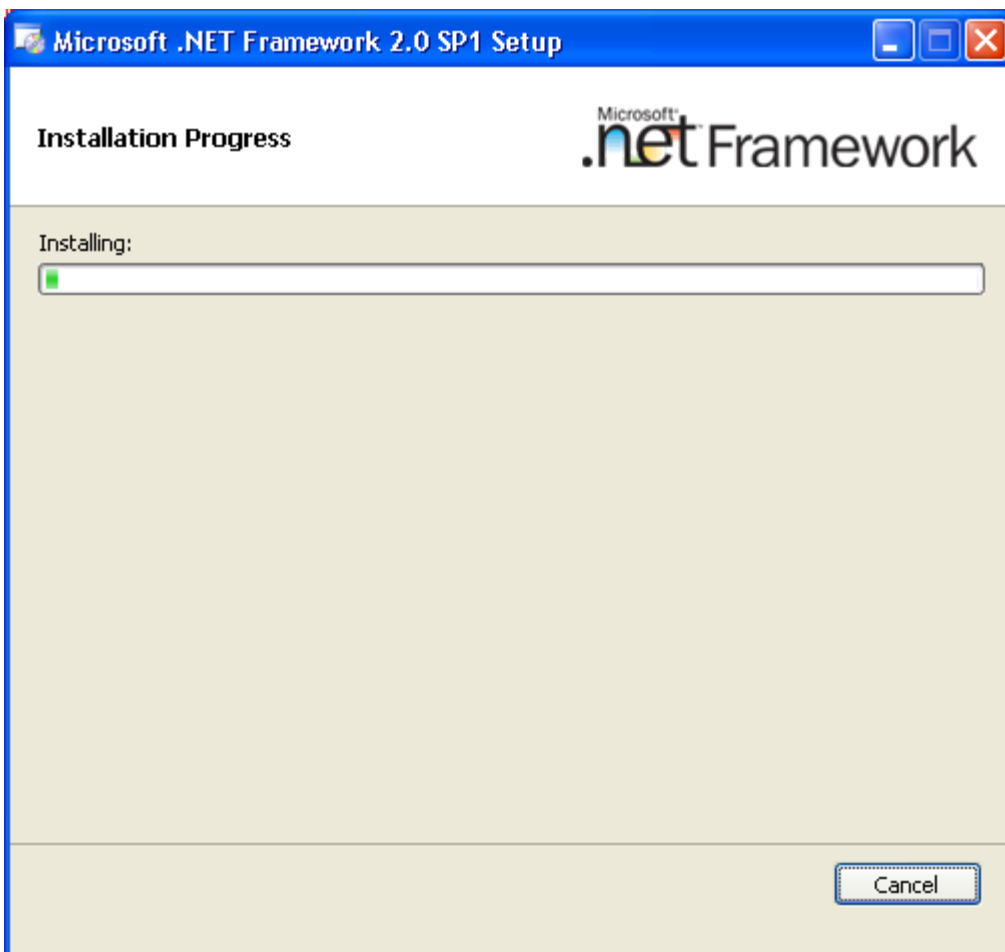


Figura 3 – Instalare Microsoft .NET Framework Versiunea 2.0

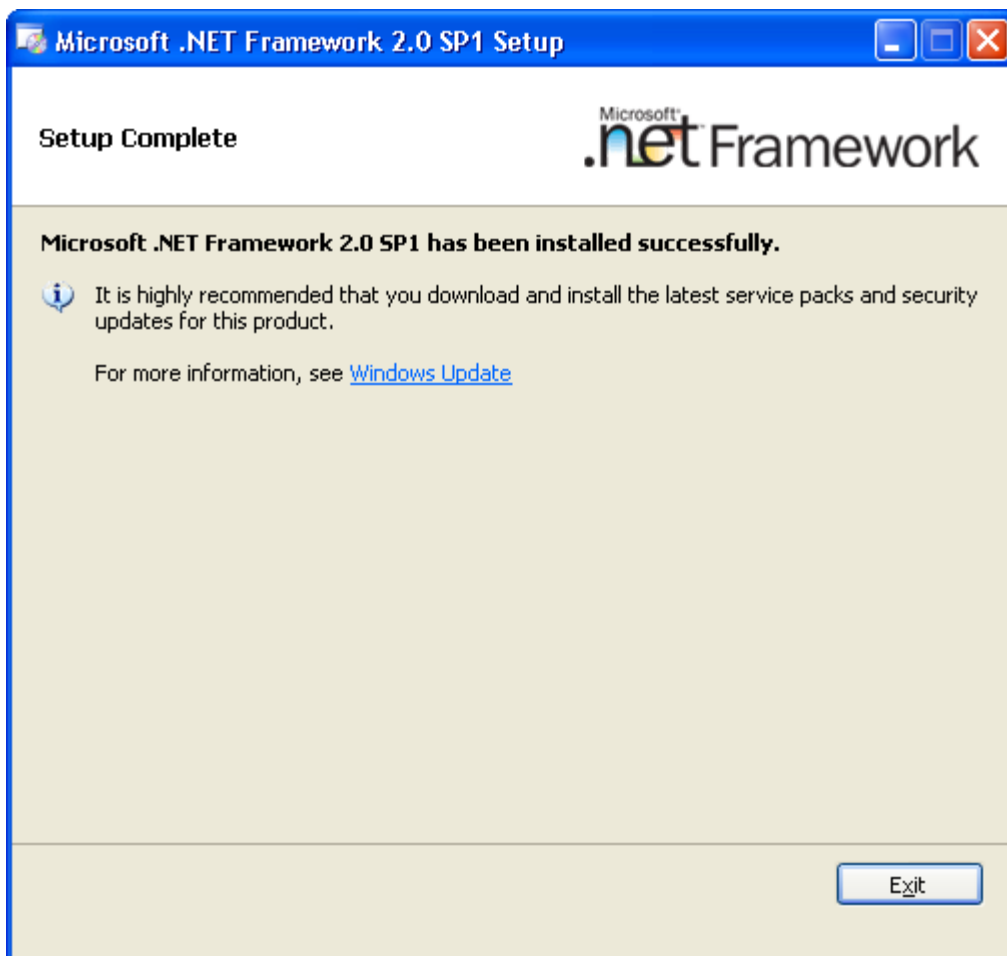


Figura 4 – Instalare Microsoft .NET Framework versiunea 2.0 - Instalare incheiata

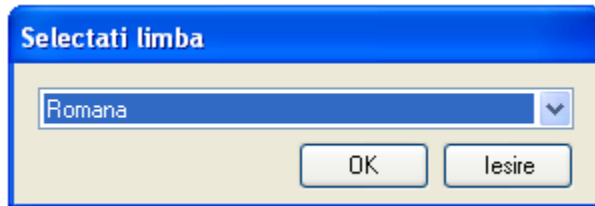
Singurul lucru care trebuie notat este acela ca aplicatia va opri IIS pentru o scurta perioada de timp in timpul instalarii.

Capitolul 3

Instalare Ciel Web Reports

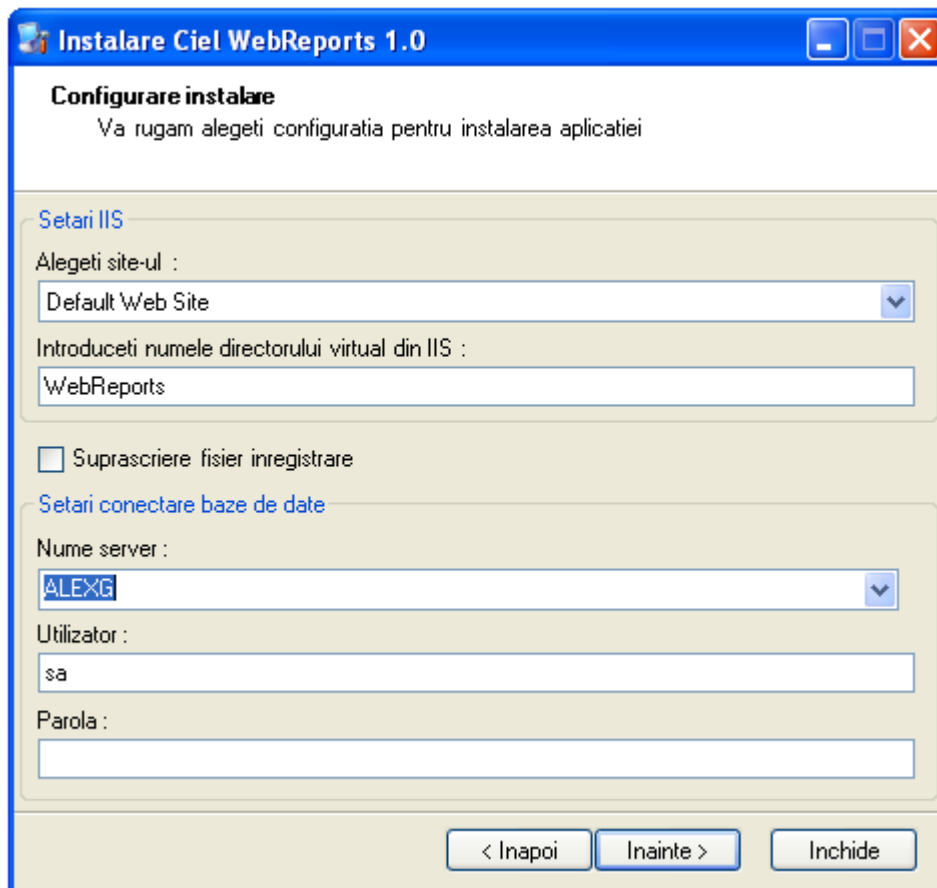
Dublu click pe SetupWebReports.exe

Se selecteaza limba programului de instalare



Completati numele directorului virtual din IIS

Si serverul SQL folosit de instalare, daca nu este cel local si parametrii de conectare la server



Se activeaza aplicatia

Instalare Ciel WebReports 1.0

Pagina inregistrare
Inregistrare aplicatie

Radacina codului de activare

Codul de activare

Pentru a obtine codul de activare va rugam sa contactati departamentul de asistenta tehnica la telefonul 021/201.53.90 sau sa trimiteti un e-mail la codacces@ciel.ro

CIEL ROMANIA S.A.
Calea Dorobantilor nr. 85 - 87


Telefoane (+4) 021/201.53.53 - Asistenta tehnica
(+4) 021/201.53.00 - Comercial
Fax (+4) 021/201.53.03
E-mail ciel@ciel.ro, <http://www.ciel.ro>

< Inapoi Inainte > Inchide

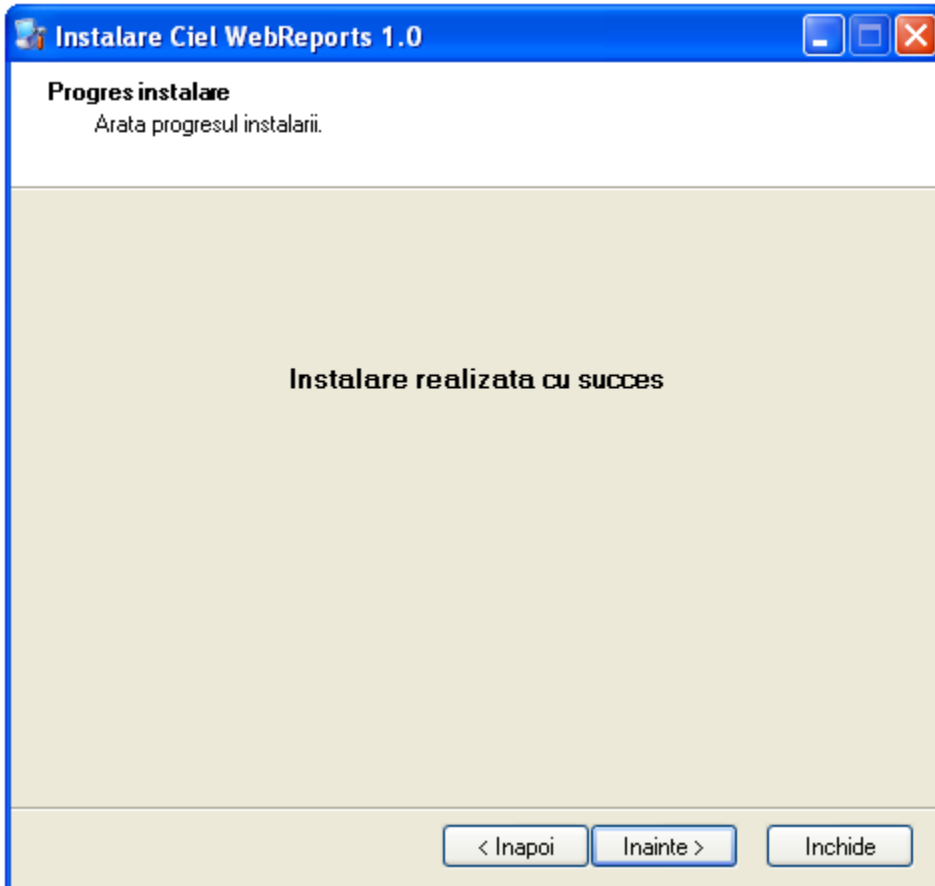
Instalare Ciel WebReports 1.0

Progres instalare
Arata progresul instalarii.

Se instaleaza programul



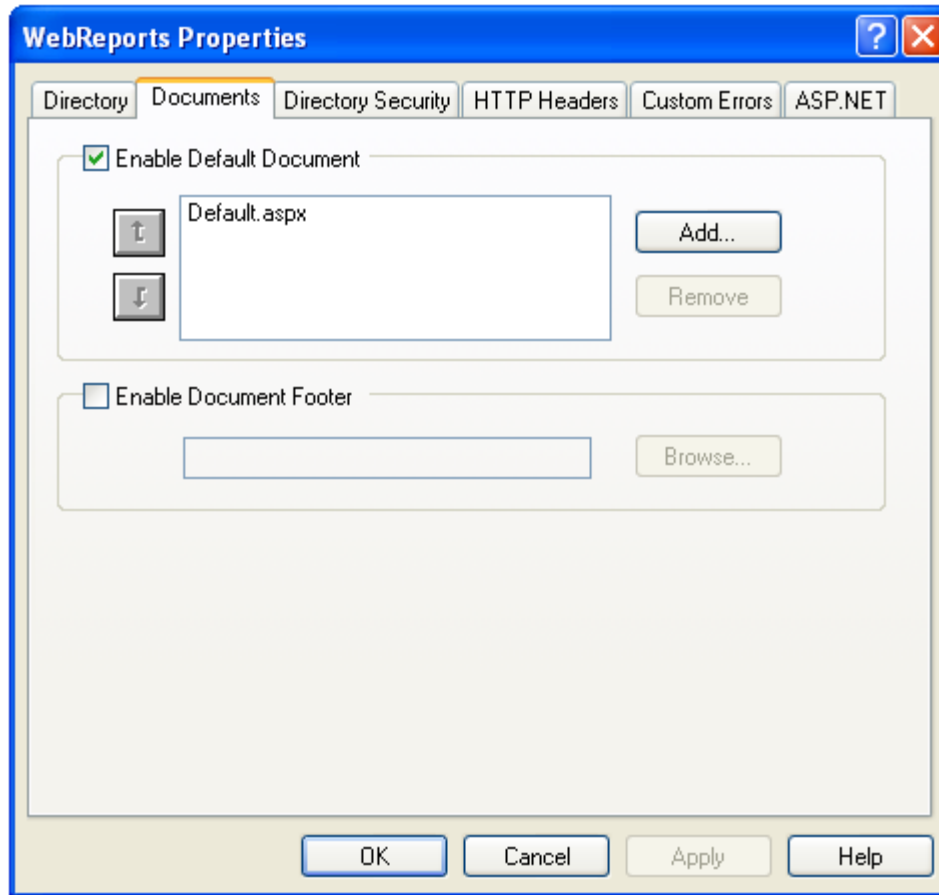
< Inapoi Inainte > Inchide



Troubleshooting

-This Virtual Directory does not allow contents to be listed.

Trebuie scris default.aspx in documents



Server Error in '/WebReports' Application.

Configuration Error

Description: An error occurred during the processing of a configuration file required to service this request. Please review the specific error d

Parser Error Message: Unrecognized attribute 'xmlns'.

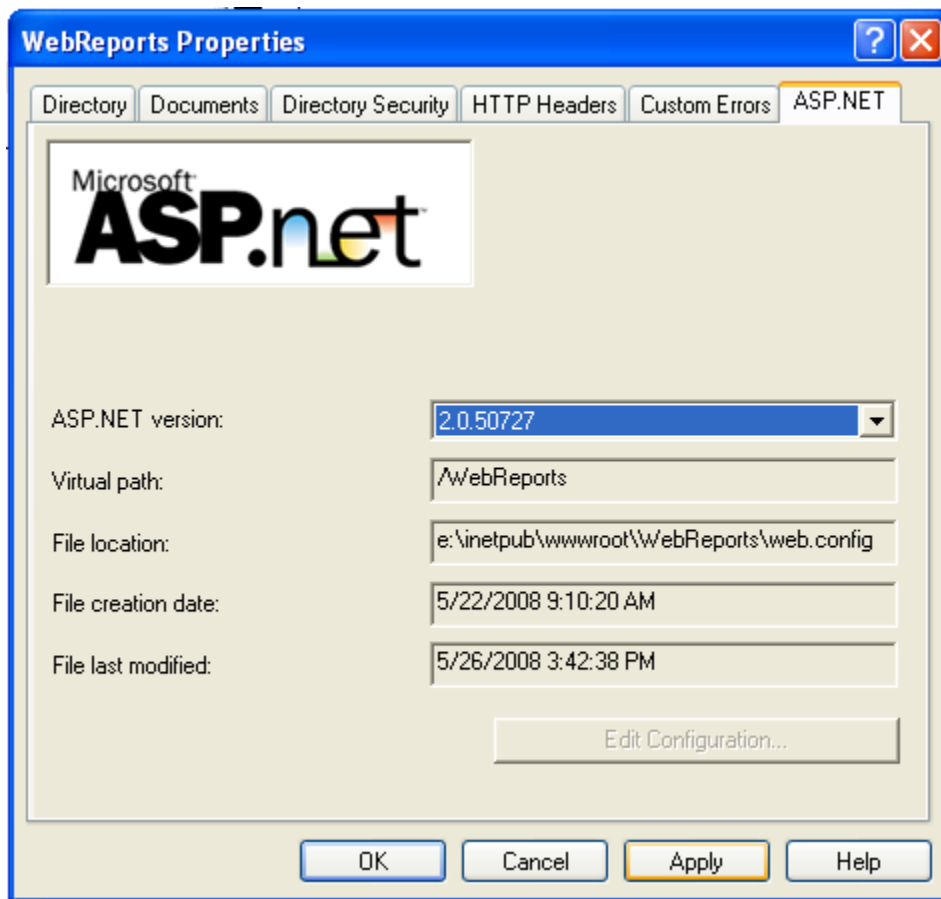
Source Error:

```
Line 1: <?xml version="1.0"?>
Line 2: <configuration xmlns="http://schemas.microsoft.com/.NetConfiguration/v2.0">
Line 3:     <configSections>
Line 4:         <sectionGroup name="system.web.extensions" type="System.Web.Conf
```

Source File: e:\inetpub\wwwroot\WebReports\web.config **Line:** 2

Version Information: Microsoft .NET Framework Version:1.1.4322.2407; ASP.NET Version:1.1.4322.2407

ASP.NET nu e selectat pe vers 2.0



-Apare mesaj 404 File not found:

Posibile Cauze:

Conflicte intre Apache, alte servere web si IIS (internet information server) cel folosit de noi.

Rezolvare:

Inchidere celelalt(e) servere, si (re)pornire server IIS.

-Mesaj Unable to connect:

Posibile cauze:

Server web (IIS) oprit:

